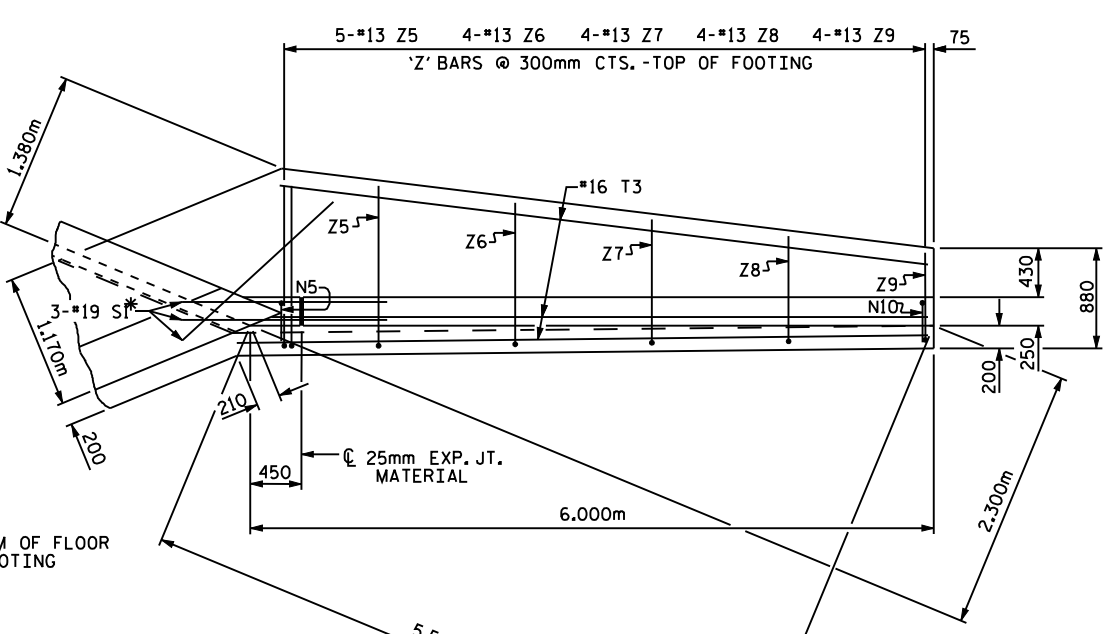
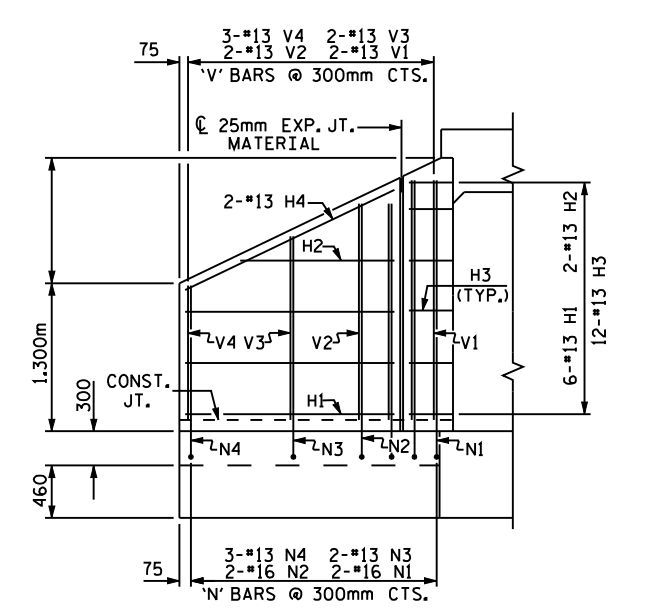


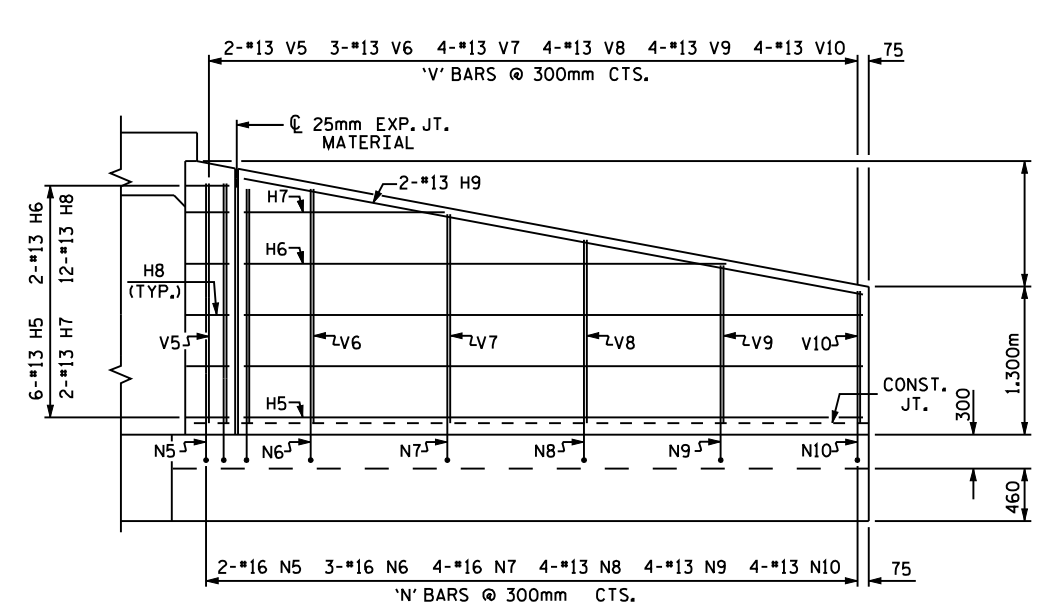
PLAN W2



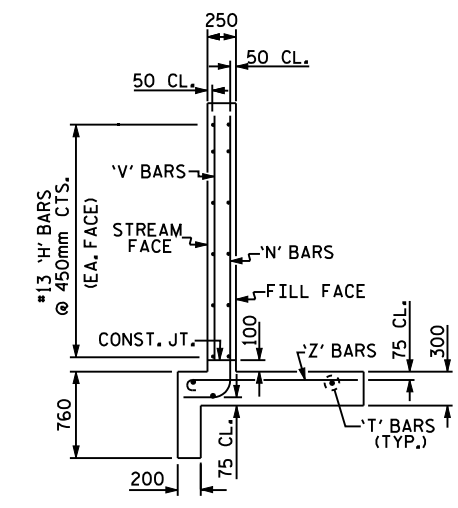
PLAN W1



ELEVATION W2



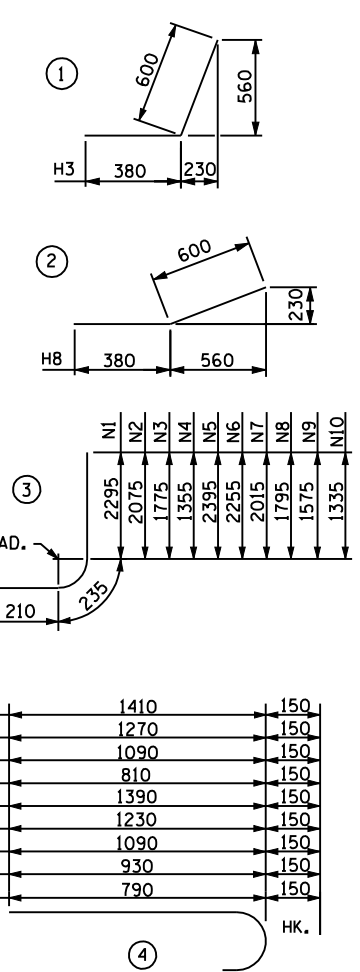
ELEVATION W1



TYPICAL WING SECTION

BAR TYPES

ALL BAR DIMENSIONS ARE OUT TO OUT.



BILL OF MATERIAL

BAR NO.	SIZE	TYPE	LENGTH	WEIGHT	
H1	12	13	STR	1840	22
H2	4	13	STR	1340	5
H3	24	13	1	980	23
H4	4	13	STR	2020	8
H5	12	13	STR	5440	65
H6	4	13	STR	4300	17
H7	4	13	STR	1940	8
H8	24	13	2	980	23
H9	4	13	STR	5520	22
N1	4	16	3	2740	17
N2	4	16	3	2520	16
N3	4	13	3	2220	9
N4	6	13	3	1800	11
N5	4	16	3	2840	18
N6	6	16	3	2700	25
N7	8	16	3	2460	31
N8	8	13	3	2240	18
N9	8	13	3	2020	16
N10	8	13	3	1780	14
S1	12	19	STR	1800	48
T1	4	16	STR	2400	15
T2	2	16	STR	2680	8
T3	6	16	STR	6000	56
V1	4	13	STR	2120	8
V2	4	13	STR	1900	8
V3	4	13	STR	1600	6
V4	4	13	STR	1180	7
V5	4	13	STR	2220	9
V6	6	13	STR	2080	12
V7	8	13	STR	1840	15
V8	8	13	STR	1620	13
V9	8	13	STR	1400	11
V10	8	13	STR	1160	9
Z1	4	13	4	1560	6
Z2	4	13	4	1420	6
Z3	4	13	4	1240	5
Z4	6	13	4	960	6
Z5	10	13	4	1540	15
Z6	8	13	4	1380	11
Z7	8	13	4	1240	10
Z8	8	13	4	1080	9
Z9	8	13	4	940	7

REINFORCING STEEL FOR 4 WINGS 668 kg

CLASS A CONCRETE  
 4 WINGS 16.5 m<sup>3</sup>  
 2 HEADWALLS \_\_\_\_\_ m<sup>3</sup>  
 2 END CURTAIN WALLS \_\_\_\_\_ m<sup>3</sup>  
 TOTAL \_\_\_\_\_ m<sup>3</sup>

PROJECT NO. \_\_\_\_\_

\_\_\_\_\_ COUNTY

STATION: \_\_\_\_\_

SHEET OF \_\_\_\_\_

STATE OF NORTH CAROLINA  
 DEPARTMENT OF TRANSPORTATION  
 RALEIGH  
 STANDARD WINGS  
 FOR  
 CONCRETE BOX CULVERT  
 H = 2.1m SLOPE 2 : 1  
 45° OR 135° SKEW

REVISIONS						SHEET NO.
NO.	BY	DATE	NO.	BY	DATE	TOTAL SHEETS
1			3			
2			4			

ASSEMBLED BY :	DATE :
CHECKED BY :	DATE :
DRAWN BY : FPP 06/97	
CHECKED BY : VAP 11/97	

FOR WING ORIENTATION, SEE BARREL STANDARD SHEET.